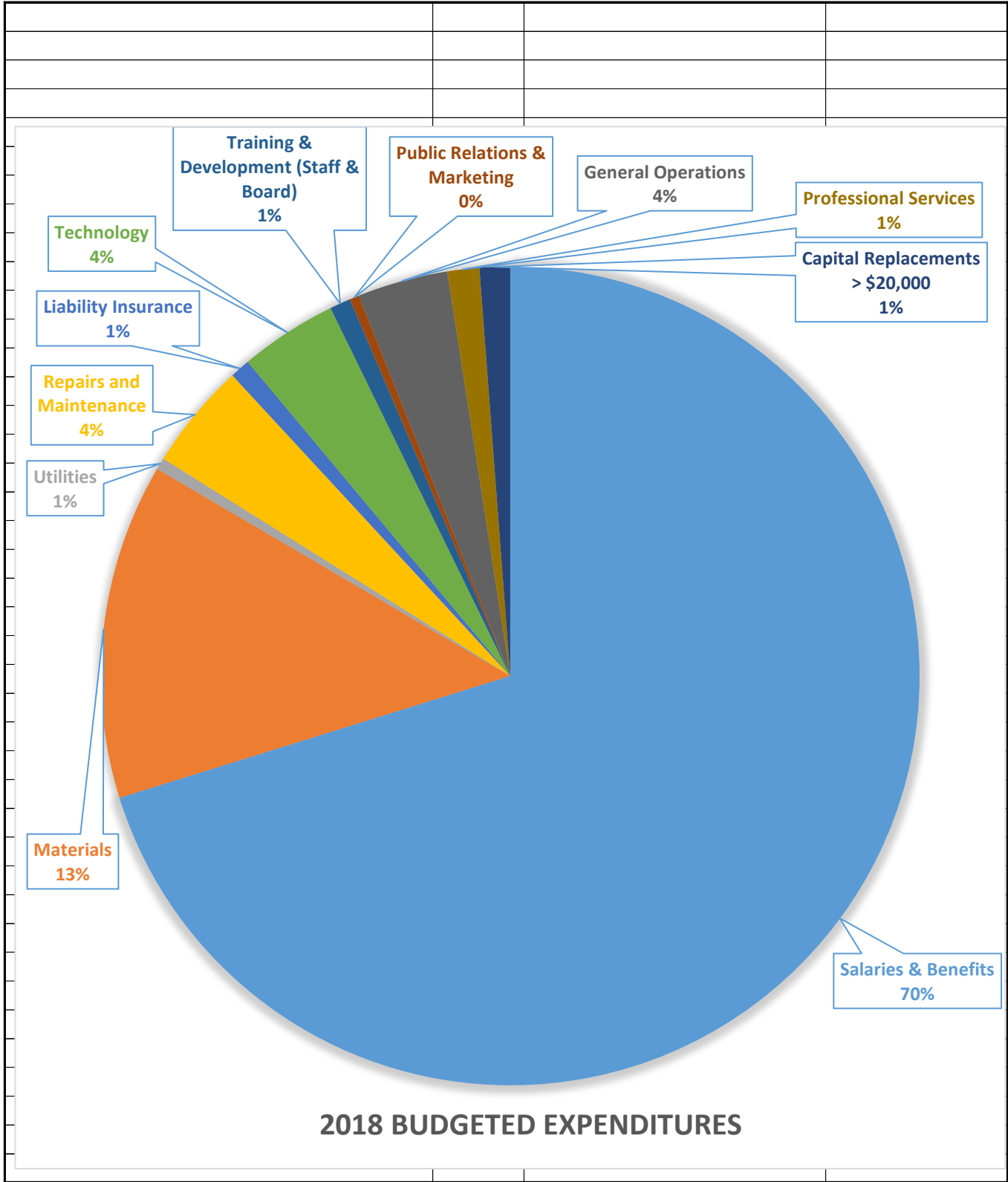


**Downers Grove Public Library
Tax Rate, Levy and EAV History**

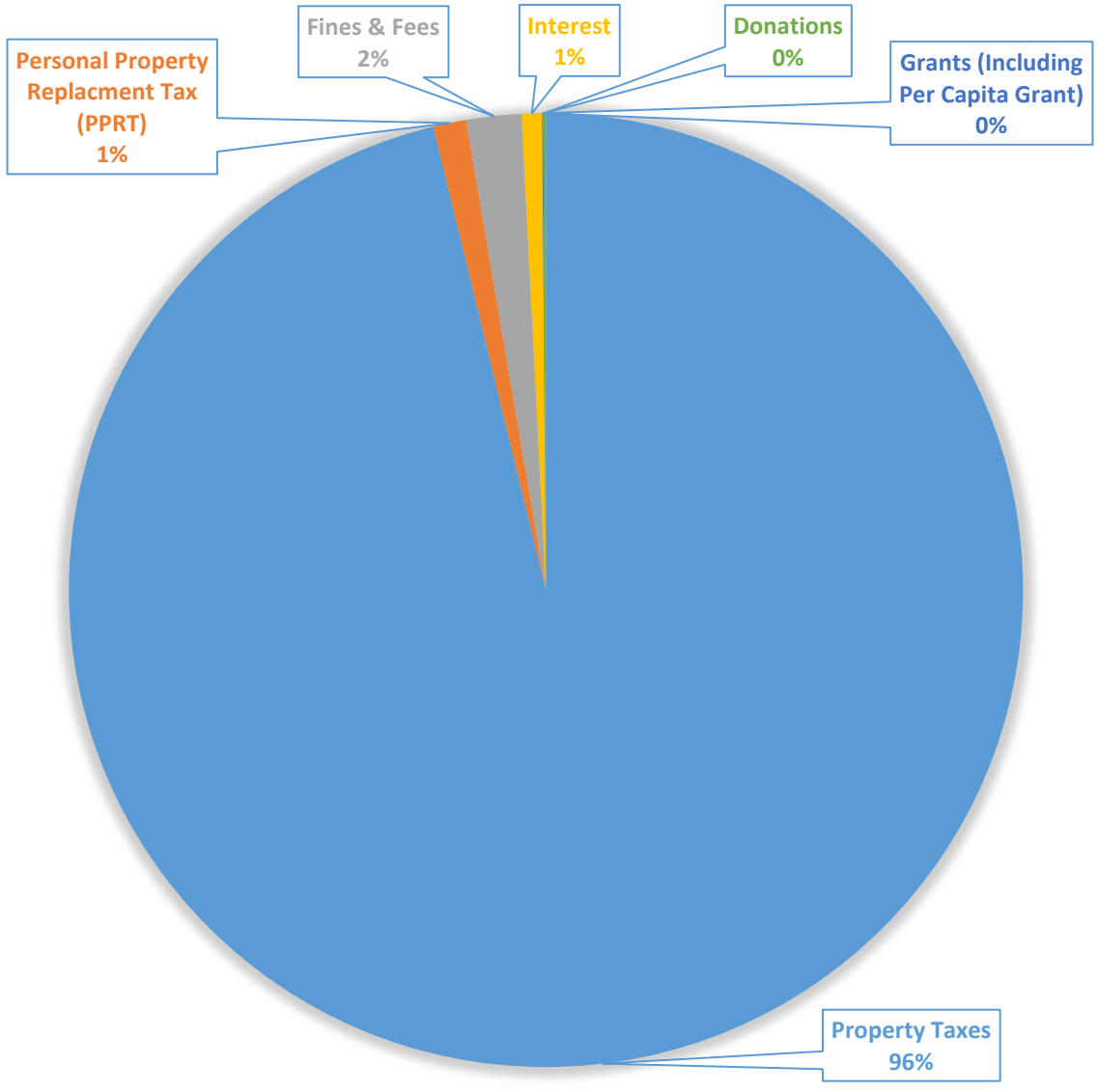
<u>RATE</u>	<u>2013</u>	<u>2014</u>	<u>2015</u>	<u>2016</u>	<u>2017</u>	<u>2018 Estimated</u>
Operating	0.2031	0.2196	0.2302	0.2253	0.2202	0.2138
Bond	<u>0.0293</u>	<u>0.0306</u>	<u>0.031</u>	<u>0.0154</u>	<u>0</u>	<u>0</u>
Total	0.2324	0.2502	0.2612	0.2407	0.2202	0.2138
% change YroYr	8.8%	7.7%	4.4%	-7.8%	-8.5%	-2.9%
<u>LEVY</u>	<u>2013</u>	<u>2014</u>	<u>2015</u>	<u>2016</u>	<u>2017</u>	<u>2018 Approved</u>
Operating	\$ 4,315,500	\$ 4,469,258	\$ 4,662,187	\$ 4,826,100	\$ 5,043,515	\$ 5,182,314
Bond	\$ 649,340	\$ 621,052	\$ 614,076	\$ 328,583	\$ -	\$ -
Total	\$ 4,964,840	\$ 5,090,310	\$ 5,276,263	\$ 5,154,683	\$ 5,043,515	\$ 5,182,314
% change YroYr	2.7%	2.5%	3.7%	-2.3%	-2.2%	2.75%
<u>EAV</u>	<u>2013</u>	<u>2014</u>	<u>2015</u>	<u>2016</u>	<u>2017</u>	<u>2018 Estimated</u>
Base	2,269,604,274	2,141,812,696	2,042,550,247	2,045,521,416	\$ 2,163,725,584	\$ 2,313,407,554
Increase / (Decrease)	\$ (127,791,578)	\$ (99,262,449)	\$ 2,971,169	\$ 118,204,168	\$ 149,681,970	\$ 111,043,563
Total	\$ 2,141,812,696	\$ 2,042,550,247	\$ 2,045,521,416	\$ 2,163,725,584	\$ 2,313,407,554	\$ 2,424,451,117
% change YroYr	-5.6%	-4.6%	0.1%	5.8%	6.9%	4.8%
Library Tax Per \$100K Home Value	\$ 77.47	\$ 83.40	\$ 87.07	\$ 80.23	\$ 73.40	\$ 71.25
Staff Cost of Living Increase		3.5%	4.0%	3.5%	2.5%	2.5%

Downers Grove Public Library
2018 Budget



2018 BUDGETED EXPENDITURES

**Downers Grove Public Library
2018 Budget**



2018 BUDGETED REVENUES

**Downers Grove Public Library
Operating, Bond, and Total Levy**

<u>LEVY</u>	<u>2013</u>	<u>2014</u>	<u>2015</u>	<u>2016</u>	<u>2017</u>	<u>2018</u>
Operating	\$ 4,315,500	\$ 4,469,258	\$ 4,662,187	\$ 4,826,100	\$ 5,043,515	\$ 5,182,314
Bond	\$ 649,340	\$ 621,052	\$ 614,076	\$ 328,583	\$ -	\$ -
Total	\$ 4,964,840	\$ 5,090,310	\$ 5,276,263	\$ 5,154,683	\$ 5,043,515	\$ 5,182,314
<u>% change operating</u>	3.1%	3.6%	4.3%	3.5%	4.5%	2.75%
<u>% change bond</u>	0.4%	-4.4%	-1.1%	-46.5%	-100.0%	
<u>% change TOTAL</u>	2.7%	2.5%	3.7%	-2.3%	-2.2%	2.75%